



MAGICTHEGATHERING.COM

ARTICLES

- ↓ [Related links](#)
- ➔ [Read other articles](#)

TOURNAMENTS

MAGIC ONLINE

Article Search ➔

Odyssey style guide: Nantuko

Magic Arcana
Thursday, March 18, 2004

The Nantuko are a race of wise, mantis-like creatures from the *Odyssey* block. Spiritually close to nature, they are druids by profession. Today's Magic Arcana takes a behind-the-scenes look at the Nantuko chapter of the *Odyssey* style guide, to see what the artist illustrating these Insect Druids saw when the cards were still being designed.



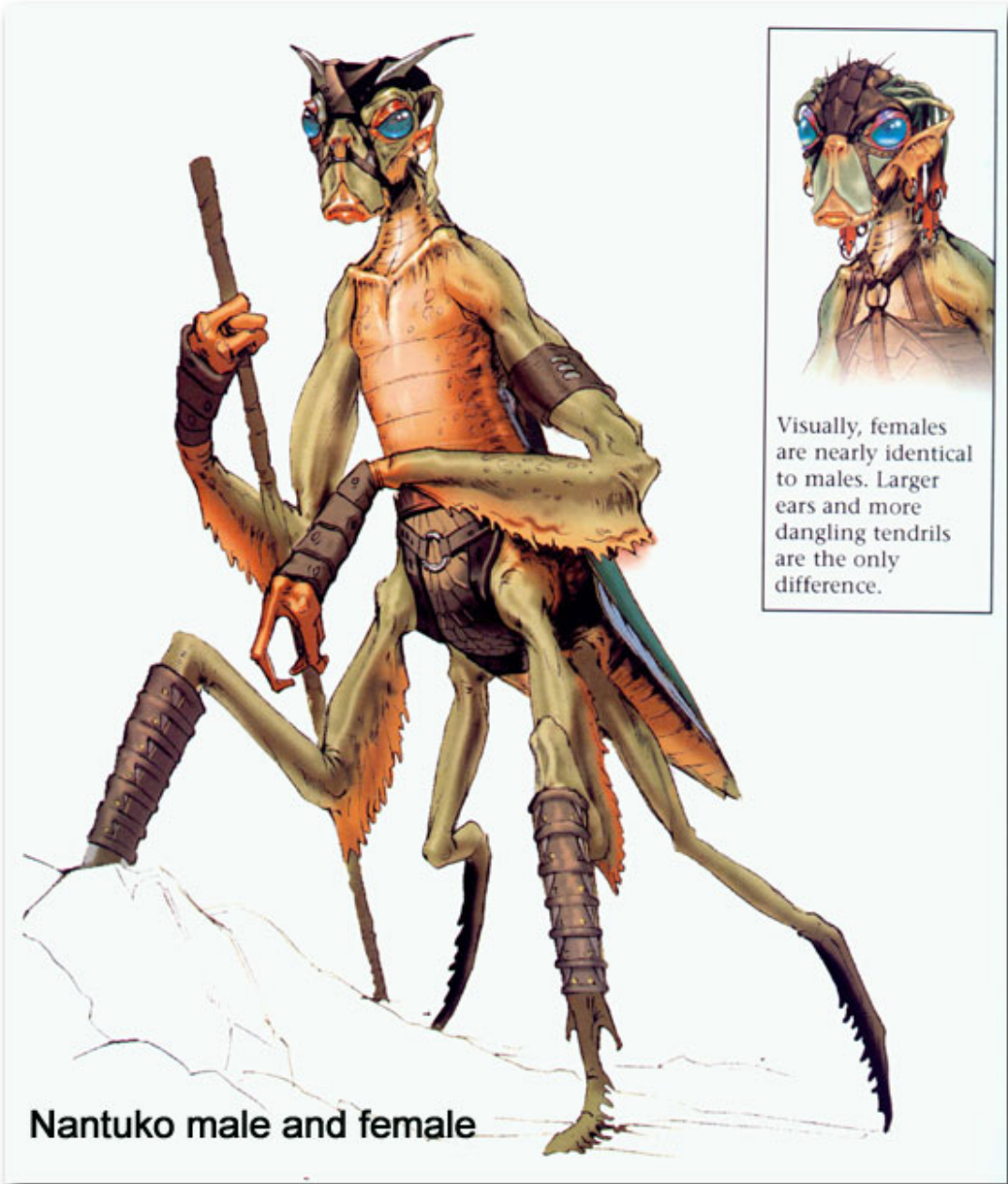
To the right is a close-up concept illustration of a male Nantuko's head features. The caption reads:

*"Male shaman/elder
Older males grow chin and nostril tendrils as they age"*

Don't chuckle: nothing makes an older mantis look more distinguished than long nostril tendrils!



Below is a diagram of the morphological differences between male and female Nantuko.

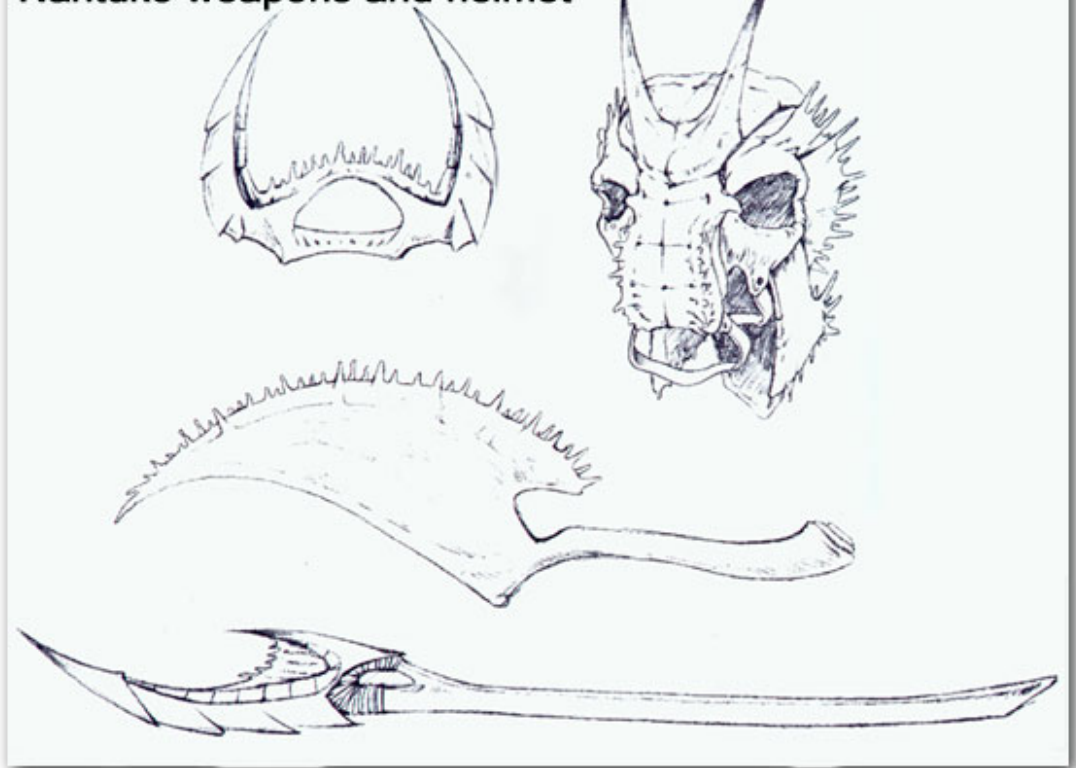


Nantuko male and female

Visually, females are nearly identical to males. Larger ears and more dangling tendrils are the only difference.

And here are some sketchbook concepts of some Nantuko bone weapons and armor.

Nantuko weapons and helmet



[Magic Arcana Archive](#)

Continue

Other recent articles



[Spirited Away-kening](#) Revisiting multiplayer's best spirit
Anthony Alongi

Today



[IntoTheAether Invokes the Ultimus Principle](#) Tribal and PDC revisited
Jay Moldenhauer-Salazar

Today



[Forgotten Lore: 10 Mental Blocks of Magic](#) Improving your play by challenging your assumptions and habits
Mark Rosewater

Yesterday



[That's the Spirit](#) Looking back on the design behind several of Magic's spirits.
Mark Rosewater

Yesterday



[Champions Sealed Deck Primer: Scott's Build](#) Building the deck from last week's card pool.
Scott Wills

Yesterday

- [More recent articles](#)
- [Return to Magicthegathering.com](#)

PRIVACY STATEMENT